



**EMAUX®**  
Water Technology

# CRYSTAL FILTRATION MEDIA

Your Choice for Superior Pool Filter Media



## Premium Grade Media For Your Pool

Crystal glass media is a direct replacement for normal silica sand which offers you the most dependable and cost effective way to enhance the performance of your pool filtration system.

### APPLICATIONS

- Swimming Pool
- Water Park
- Water Treatment
- Aquarium



### ENHANCE FILTRATION RESULT

- Improves the water clarity over silica sand
- Removes finer impurities than equivalent grade of silica sand

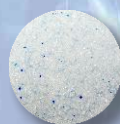
### COST EFFECTIVE

- Reduces 30% of water for backwashing
- Power consumption reduce for backwash time shorten
- Longer operational life than silica sand due to higher attrition strength which does not break down easily

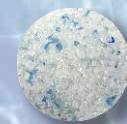
### SIZE AVAILABLE



0.5 mm - 0.8 mm



1.0 mm - 2.0 mm



3.0 mm - 4.0 mm

# Crystal Filtration Media

A better alternative for the best pool filtration result



**EMAUX**<sup>®</sup>  
Water Technology

**EMAUX Crystal Glass Media results in outstanding performance and cost effectiveness over the life of other filtration media.**

## Longer life span than silica sand

Relevant laboratory testing and articles proved that glass media is having 3 times longer life span than normal silica sand as glass media is a stronger and more durable material which is not as easy to be grinded into finer particles.

## A safer and healthy media to be chosen

- Crystal media does not contain crystalline silica which benefits good health
- Does not retain bacteria in filter media due to higher attrition strength
- Lowers the use of chlorine and coagulants
- Manufactured from 100% recycled glass

## A cost effective media which saves the effort for maintenance

- Labor and time savings for maintenance
- Improved performance for pressure or gravity-flow filters
- Lower density requires up to 30% less media
- Back washes with up to 30% less water, saving down-time and water/sewer charges
- Extend life span for your filtration system

### Technical Data

- **Specific Gravity**  
2.43
- **Bulk Density**  
1.34
- **Effective Size**  
Ranges from 0.30 to 1.10 mm
- **Coefficient of Uniformity**  
Ranges from 1.45 to 1.80
- **Estimated Sphericity**  
Approximately 0.40
- **Porosity**  
Typically 48%
- **Shape**  
Angular
- **Physical Composition**  
Amorphous soda-lime glass
- **Typical Chemical Composition**  
SiO<sub>2</sub> - 71.93%  
Na<sub>2</sub>O - 14.04%  
CaO - 8.62%  
MgO - 3.85%  
Al<sub>2</sub>O<sub>3</sub> - 0.96%  
So<sub>3</sub> - 0.22%

### Packaging

0.5 mm - 0.8 mm	15kg bag / 25kg bag
1.0 mm - 2.0 mm	25kg bag
3.0 mm - 4.0 mm	25kg bag

Contact you nearest EMAUX authorized dealer

